

BAY OF BISCAY

1335 28 December 1943

Background: In December of 1943, the German blockade runner Alsterufer had made the long journey from Japanese-held Asia and was trying to get into a French port. The British got word of this when they decoded a message to U-boats forbidding attacks on ships steaming alone. Determined to stop the blockade runner, the Royal Navy sent several forces to search the approaches to Brest. Equally determined to see the Alsterufer safely into port, the Kriegsmarine dispatched light units to cover it. One of the British search units was vectored onto the German light forces by a search aircraft.

Forces:

Royal Navy Captain Clarke	Division 1	Glasgow Enterprise	(Southampton -- flag) (Enterprise)
Kriegsmarine Captain Erdmenger	Division 1	Z27 Z23	(Type 36A -- flag) (Type 36A)
	Division 2	Z24 Z32 Z37	(Type 36A -- flag) (Type 36A) (Type 36A)
	Division 3	T23 T24 T26 T22 T25 T27	(Type 39-- flag) (Type 39) (Type 39) (Type 39) (Type 39) (Type 39)

Set-up:

N^

British Division 1 is on a course of 180, 36 inches from the west edge and 12 inches from the north edge.

German Division 1 is in line ahead on a course of 150, 20 inches from the west edge and 20 inches from the north edge. German Division 2 is in line ahead on a course of 150, 4 inches west of Division 1. German Division 3 is in line ahead on a course of 150, 2 inches west of Division 2.

Victory Conditions:

- The German player gets 1 victory point for each British cruiser left dead in the water and 2 victory points for each British cruiser sunk.
- The British player gets 1 point for each German ship sunk or left dead in the water.

Special Rules:

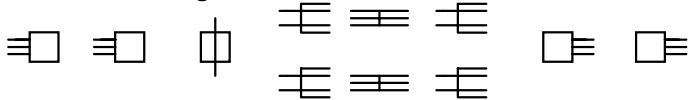
- The seas are heavy. All ships are limited to a speed of 3.00 inches.
- Each German Type 36A destroyer has its forward twin 5.9 inch turret installed, thus giving it a 5.9 inch twin mount in A position and singles in M, X and Y positions. The 5.9 inch guns have a -2 modifier due to their instability on DD mounts and a further -3 modifier due to the heavy seas.
- The British cruisers have 273, 281, 284 and 285 radars fitted.
- The spotting base is **16**, with a -2 gunfire modifier -- daylight with surface spray.

Outcome: The heavy seas limited the speed of the German ships and prevented them from capitalizing on their numerical superiority. Six inch gunfire defeated a German torpedo attack with heavy losses to the Germans. The Germans lost Z27, T25 and T26 sunk, with the rest of the force scattered to various Biscay ports. All this was for nothing, as Allied aircraft had sunk the Alsterufer before the action was fought.

Southampton

<u>Navy</u>	Royal Navy	<u>Date</u>	1942
<u>Class</u>	Heavy cruiser		
<u>Surface Armament</u>		<u>Ranges</u>	<u>Directors</u>
Main Battery:	6 inch guns in 4 triple turrets	25 inches	See Notes
Secondary Battery:	4 inch guns in 4 twin mounts	16 inches	See Notes
Torpedoes:	21 inch torpedoes in 2 triple mounts	13 inches at 4.25"	Port and starboard
	2 special hits	16 inches at 2.75"	
<u>Speed</u>	4.00"	4 boilers	4 engines
<u>Flotation</u>	Total: 67	DIW: 33	Sinking: 44
		<u>Torpedo Hits</u>	17.7"-18": ±1 20.5"-22.5": ±2 24": ±3

Armament Arrangement



Hits

Officers Berths	11-12	Void
Fuel Oil 1	13-14	Void
Main Magazine A	15-21	Main A
Main Magazine B	22-24	Main B
Main Magazine B	25	Bridge
Transmitting Room	26	Bridge, Main Director
Boiler Room 1	31	Bridge, Forward Secondary Director 1 or 2
Boiler Room 1	32	Search Radar, Aircraft
Boiler Room 1	33	Funnel, AAMGs, Aircraft
Engine Room 1	34	AAMGs
Engine Room 1	35	Catapult
Engine Room 1	36	Void
Boiler Room 2	41-42	Funnel
Boiler Room 2	43	Secondary 1 or 2, Searchlight
Secondary Magazine	44	Torpedo 1 or 2
Secondary Magazine	45	Torpedo 1 or 2
Engine Room 2	46	Secondary 3 or 4
Engine Room 2	51	AAMGs [Aft Secondary Director]
Engine Room 2	52	[Aft Secondary Director] [Aft Primary Director]
Main Magazine X	53-55	Main X
Main Magazine Y	56-62	Main Y
Fuel Oil 2, Propshaft 1 or 2	63-64	Void
Steering, Propshaft 3 or 4	65	Steering
Void	66	Void

Notes

- Eight ships in class, including Newcastle and Sheffield.
- All has a forward primary director and port and starboard directors forward. Sheffield, Birmingham and Glasgow have a third secondary director aft. Manchester, Liverpool and Gloucester also had a second primary director aft.

Internal Diagram

V1 1FP	FO1 2FP	FM A 2FP	FM B 2FP	TR 1FP	BR1 B1 B2 14FP	ER1 E1 E2 11FP	BR2 B3 B4 14FP	SM 2FP	ER2 E3 E4 11FP	AM X 2FP	AM Y 2FP	FO2 2FP	ST 1FP	V 0FP
-----------	------------	----------------	----------------	-----------	-------------------------	-------------------------	-------------------------	-----------	-------------------------	----------------	----------------	------------	-----------	----------

Enterprise

<u>Navy Class</u>	Royal Navy Light cruiser	<u>Date</u>	1942
<u>Surface Armament</u>		<u>Ranges</u>	<u>Directors</u>
Main Battery:	6 inch guns in 1 twin turret and 3 single mounts	25 inches	Fore
Secondary Battery:	4 inch guns in 3 single mounts	16 inches	Amidships
Torpedoes:	21 inch torpedoes in 4 quadruple mounts 2 special hits	13 inches at 4.25" 16 inches at 2.75"	Port and starboard
<u>Speed</u>	4.00"	8 boilers	4 engines
<u>Flotation</u>	Total: 62	DIW: 31	Sinking: 42
<u>Torpedo Hits</u> 17.7"-18": ±1 20.5"-22.5": ±2 24": ±3			

Armament Arrangement



Notes

- Emerald was similar, but with two single 6 inch guns forward vice the 6 inch turret..
- X Main cannot fire into stern arc.

Hits

Aviation Gas	11-12	Void
Fuel Oil 1	13-16	Void
Forward Magazine	21-23	A Turret
Fuel Oil 2	24	Bridge
Fuel Oil 2	25	Bridge, Main Director Control
Boiler Room 1	26	Search Radar
Boiler Room 1	31-32	Funnel
Boiler Room 1	33	Void
Boiler Room 2	34	Funnel, AAMGs
Boiler Room 3	35	Funnel, AAMGs
Midships Magazine 1	36	Main 1 or 2
Engine Room 1	41	Searchlight 1 or 2
Engine Room 1	42	Secondary 1 or 2
Engine Room 1	43	Secondary Director, Torpedo Mount 1 or 2
Boiler Room 4	44	Torpedo 1 or 2
Boiler Room 4	45	Funnel
Midships Magazine 2	46	Main M
Engine Room 2	51	Aircraft, Catapult
Engine Room 2	52-53	Torpedo 3 or 4
Aft Magazine	54-55	Main X
Aft Magazine	56	Secondary X
Fuel, Propshaft 1 or 2	61-62	Main Y
Void, Propshaft 3 or 4	63-64	Void
Steering	65	Steering
Void	66	Void

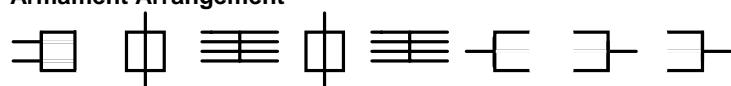
Internal Diagram

V1 1FP	FO1 2FP	FM A 2FP	BR1 B1 B2 7FP	BR2 B3 B4 7FP	MM1 2FP	BR3 B5 B6 7FP	ER1 E1 E2 10FP	BR4 B7 B8 7FP	MM2 2FP	ER2 E3 E4 10FP	AM X 2FP	FO2 2FP	ST 1FP	V 0FP
-----------	------------	----------------	------------------------	------------------------	------------	------------------------	-------------------------	------------------------	------------	-------------------------	----------------	------------	-----------	----------

Type 36A

<u>Navy</u>	Deutsches Kriegsmarine	<u>Date</u>	1942
<u>Class</u>	Destroyer		
<u>Surface Armament</u>		<u>Ranges</u>	<u>Directors</u>
Main Battery:	5.9 inch guns in 1 twin and 3 single turrets	24 inches	Forward and aft
Torpedoes:	21 inch torpedoes in 2 quadruple mounts	8 inches at 5.00"	Port and starboard
		13 inches at 3.75"	
<u>Speed</u>	4.75"	6 boilers	2 engines
<u>Flotation</u>	Total: 31	DIW: 16	Sinking: 20
		<u>Torpedo Hits</u>	17.7"-18": ±1 20.5"-22.5": ±3 24": ±5

Armament Arrangement



Hits

Void 1	11-14	Void
Forward Main Magazine	15-22	Main A
Forward Main Magazine	23-24	AAMGs
Boiler Room 1	25	Bridge, Torpedo Directors
Boiler Room 1	26	Bridge, Forward Director
Boiler Room 2	31	Funnel
Boiler Room 2	32	Funnel
Turbogenerator Room	33	Torpedo A
Boiler Room 3	34-35	Torpedo A
Boiler Room 3	36	Funnel
Engine Room 1	41	Searchlight, AAMGs
Engine Room 1	42-43	Torpedo B, Torpedo Director
Fuel Oil	44	Torpedo B
Engine Room 2	45	AAMGs, Main M
Engine Room 2	46	Main M
Engine Room 2	51	Main M
Aft Main Magazine	52	AAMGs
Aft Main Magazine	53-55	Main X
Void 2	56-62	Main Y
Void 2, Propshaft 1 or 2	63-64	Void
Steering	65-66	Steering

Notes

- Class included Z-23 through Z-39.
- First eight completed with 4 single gun mounts. Most received a forward turret in lieu of the forward single mount in 1942.
- At first glance, "super-destroyers"; but the class suffered from poor sea-keeping abilities, unreliable powerplant, and a main battery too large for the hulls
- -2 to main battery accuracy; -3 (rather than -2) optional modifier in heavy seas.
- Fuel tanks like cruisers, outboard of machinery spaces.

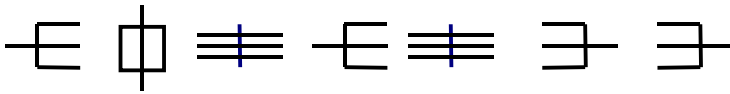
Internal Diagram

V1 1FP	FM A 3FP	BR1 B1,B2 3FP	BR2 B3,B4 3FP	TR 1FP	BR3 B5,B6 3FP	ER1 E1 4FP	FO 1FP	ER2 E2 4FP	AM MX 4FP	V2 2FP	ST 2FP
-----------	----------------	---------------------	---------------------	-----------	---------------------	------------------	-----------	------------------	-----------------	-----------	-----------

Type 39

<u>Navy Class</u>		Deutsches Kriegsmarine Torpedo boat		<u>Date</u>	1941		
<u>Surface Armament</u>				<u>Ranges</u>	<u>Directors</u>		
Main Battery:		4.1 inch guns in 4 single mounts		15 inches		Fore	
Torpedoes:		21 inch torpedoes in 2 triple mounts		8 inches at 5.00"		Aft	
				13 inches at 3.75"			
<u>Speed</u>	4.00"	4 boilers	2 engines				
<u>Flotation</u>	Total: 29	DIW: 15	Sinking: 20				
				<u>Torpedo Hits</u>	17.7"-18": ±2	20.5"-22.5": ±4	24": ±6

Armament Arrangement



Notes

- Class included T-22 through T-36.

Hits

Void 1	11-13	Forward Void
Void 1	14	Main A
Forward Main Magazine	15-16	Main A
Forward Main Magazine	21-22	AAMGs
Fuel Oil 1	23	Bridge
Fuel Oil 1	24	Torpedo Directors, Bridge
Boiler Room 1	25	Main Director, Bridge
Boiler Room 1	26-31	Funnel
Engine Room 1	32-33	Torpedo A
Engine Room 1	34	Torpedo A
Midships Main Magazine	35-36	Main M
Boiler Room 2	42	Funnel
Boiler Room 2	43-44	AAMGs
Engine Room 2	45-46	Torpedo B
Engine Room 2	51	Torpedo B
Turbogenerator Room	52-53	AAMGs
Aft Main Magazine	54-56	Main X
Aft Main Magazine	61	Void
Fuel Oil 2, Propshaft 1 or 2	62-63	Main Y
Fuel Oil 2, Propshaft 1 or 2	64	Void
Steering	65-66	Steering

Internal Diagram

V1 2FP	FM A 2FP	FO1 3FP	BR1 B1,B2 4FP	ER1 E1 3FP	MM M 1FP	BR2 B3,B4 4FP	ER2 E2 3FP	TR 1FP	AM XY 2FP	FO2 2FP	ST 2FP
-----------	----------------	------------	---------------------	------------------	----------------	---------------------	------------------	-----------	-----------------	------------	-----------