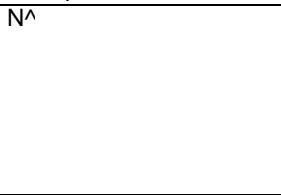


NORTH CAPE -- FIRST CONTACT**0840 26 December 1943**

Background: The Battle of North Cape resulted from the Kriegsmarine's last fling at using surface forces against Russia-bound convoys. In this case the target was JW55B, a convoy of 18 merchantmen bound for Murmansk. The Germans spotted the convoy early and on Christmas Day 1943 sent Scharnhorst and five destroyers against it. The Germans sailed into the teeth of a Force 7 gale with orders not to repeat the timid performance of the Battle of Barents Sea. The next day, the German force collided with the screening cruisers of Rear Admiral Burnett.

Forces:

Royal Navy	Division 1	Belfast	(Belfast -- flag)
Vice-Admiral R. L. Burnett		Sheffield	(Southampton)
	Division 2	Norfolk	("County" Class)
Kriegsmarine	Division 1	Scharnhorst	(Scharnhorst)
Rear-Admiral Erich Bey	Division 2	Z29	(Type 36A -- flag)
		Z30	(Type 36A)
		Z33	(Type 36A)
		Z34	(Type 36A)
		Z38	(Type 36A)

Set-up:

German Division 1 is on a course of 360 (due north), 38 inches from the east edge and 24 inches from the north edge, moving at a speed of 1.50 inches. German Division 2 is on a course of 240 in line abreast with 10 inches separating each destroyer, moving at a speed of 1.50 inches. The middle destroyer from the northern end of the line is 56 inches from the east edge and 46 inches from the north edge.

British Divisions 1 and 2 begin in line abreast with Division 2 to the south and 1 1/2 inches separating each ship. Both are on a course of 270 -- due west. Division 1 is 30 inches from the north edge and 6 inches

from the east edge.

Victory Conditions:

- There is a convoy to the north. The German player gets 2 points for exiting Scharnhorst from the north edge if she has at least half her main battery operable and speed of at least 3.00 inches.
- The German player gets 1 point for exiting Scharnhorst from the south edge if the same conditions as stated in a) are met.
- The German player gets 2 points for each British cruiser sunk.
- The British player gets 1 point for each German destroyer sunk, 1 point for reducing Scharnhorst's speed below 3.00 inches, 2 points for reducing Scharnhorst's speed to zero and 4 points for sinking Scharnhorst.

Special Rules:

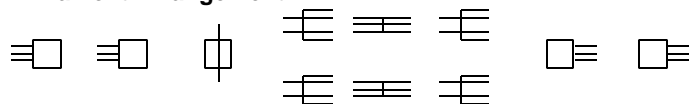
- The Type 36A destroyers have received their 5.9 inch twin turrets, thus mounting 3 5.9 inch singles amidships and aft and 1 5.9 inch twin forward. The 5.9 inch mounts have a gunnery modifier of **-2**.
- The German destroyers will continue on their current course and speed until fired on by the British. Scharnhorst must continue on its current course and speed until fired on by the British.
- All British cruisers have 273, 281, 284 and 285 radar and CICs.
- Seas are heavy. Scharnhorst is limited to a speed of 3.75 inches, cruisers and destroyers to a speed of 3.00 inches, and the German destroyers have a heavy seas gunnery modifier of **-3**.
- Visibility is 7 inches with a gunfire modifier of **-5** -- essentially night due to the Arctic gloom and the heavy weather.
- Optional: When Burnett reported contact with Scharnhorst, Admiral Fraser ordered a division of destroyers south to support the cruiser force. These arrive on the north edge at a point selected by the British player at the start of the game. They appear no earlier than Turn 8, on 1D6 roll of 1. The force is the second division from the next scenario.

Outcome: The British cruiser force covering the convoy spotted Scharnhorst on radar and closed down to visual sighting range. They took her by surprise as she was moving behind a picket line of destroyers and put three shells into her before she could escape. The action gave the British a fix on Scharnhorst's position, stopped her from finding the convoy and separated her from her destroyers.

Belfast

<u>Navy</u>	Royal Navy	<u>Date</u>	1942
<u>Class</u>	Heavy cruiser		
<u>Surface Armament</u>		<u>Ranges</u>	<u>Directors</u>
Main Battery:	6 inch guns in 4 triple turrets	25 inches	Fore and aft
Secondary Battery:	4 inch guns in 4 twin mounts	16 inches	Port, starboard and aft
Torpedoes:	21 inch torpedoes in 2 triple mounts 2 special hits	13 inches at 4.25" 16 inches at 2.75"	Port and starboard
<u>Speed</u>	4.00"	4 boilers	4 engines
<u>Flotation</u>	Total: 67	DIW: 33	Sinking: 44
		<u>Torpedo Hits</u>	17.7"-18": ±1 20.5"-22.5": ±2 24": ±3

Armament Arrangement



Notes

- Similar to Southampton class, but with re-arranged internal spaces.
- Two in class: Belfast and Edinburgh
-

Hits

Officers Berths	11-12	Void
Fuel Oil 1	13-14	Void
Main Magazine A	15-21	Main A
Main Magazine B	22-24	Main B
Main Magazine B	25	Bridge
Transmitting Room	26	Bridge, Main Director
Secondary Magazine	31	Bridge, Forward Secondary Director 1 or 2
Secondary Magazine	32	Search Radar, Aircraft
Boiler Room 1	33	AAMGs, Aircraft
Boiler Room 1	34	Funnel, AAMGs
Boiler Room 1	35	Catapult
Engine Room 1	36	Void
Engine Room 1	41	Funnel
Engine Room 1	42	Secondary 1 or 2, Searchlight
Boiler Room 2	43-44	Torpedo 1 or 2
Boiler Room 2	45	Torpedo 1 or 2
Engine Room 2	46	Secondary 3 or 4
Engine Room 2	51	AAMGs, Aft Secondary Director
Engine Room 2	52	Aft Secondary Director, Aft Primary Director
Main Magazine X	53-55	Main X
Main Magazine Y	56-62	Main Y
Fuel Oil 2, Propshaft 1 or 2	63-64	Void
Steering, Propshaft 3 or 4	65	Steering
Void	66	Void

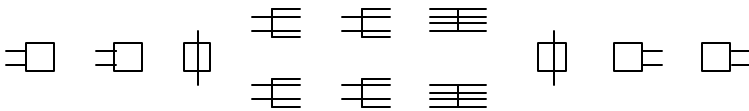
Internal Diagram

V1	FO1	FM	FM	TR	SM	BR1	ER1	BR2	ER2	AM	AM	FO2	ST	V
1FP	2FP	A	B	1FP	2FP	B1	E1	B3	E3	X	Y	2FP	1FP	0FP
		2FP	2FP			B2	E2	B4	E4	X	Y			
						14FP	11FP	14FP	11FP	2FP	2FP			

"County"

<u>Navy</u>	Royal Navy	<u>Date</u>	1942 (Cumberland modeled)	
<u>Class</u>	Heavy cruiser			
<u>Surface Armament</u>		<u>Ranges</u>	<u>Directors</u>	
Main Battery:	8 inch guns in 4 twin turrets	29 inches	Fore and aft	
Secondary Battery:	4 inch guns in 4 twin mounts	16 inches	Port and starboard	
Torpedoes:	21 inch torpedoes in 2 quadruple mounts 2 special hits	13 inches at 4.25" 16 inches at 2.75"	Port and starboard	
<u>Speed</u>	4.00"	8 boilers	4 engines	
<u>Flotation</u>	Total: 67	DIW: 34	Sinking: 44	
		<u>Torpedo Hits</u>	17.7"-18": ±1	20.5"-22.5": ±2 24": ±3

Armament Arrangement



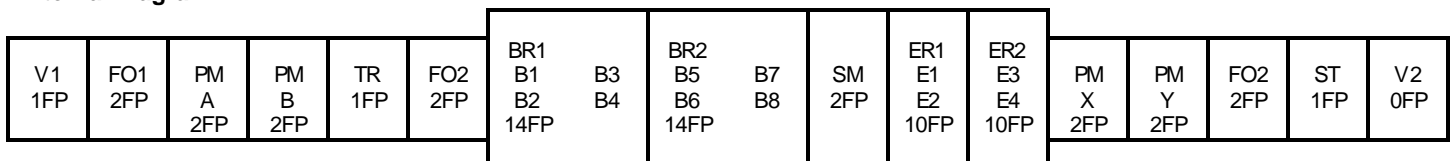
Notes

- Five ships in class, including Kent, Berwick, Cornwall, Cumberland, Suffolk
- Only Kent had torpedo tubes.

Hits

Officers Berths	11-12	Void
Fuel Oil 1	13-14	Void
Main Magazine A	15-21	Main A
Main Magazine B	22-24	Main B
Main Magazine B	25	Bridge
Transmitting Room	26	Bridge, Forward Main Director
Fuel Oil 2	31	Bridge Port or Starboard Secondary Director [Bridge,]
Boiler Room 1	32	Search Radar, AAMGs
Boiler Room 1	33	Funnel, Secondary 1 or 2
Boiler Room 1	34	Torpedo 1 or 2 [Void]
Boiler Room 1	35	Torpedo 1 or 2 [Void]
Boiler Room 2	36	Funnel, Secondary 3 or 4
Boiler Room 2	41	Funnel
Boiler Room 2	42-43	Catapult, Aircraft
Secondary Magazine	44	Aircraft
Engine Room 1	45	Aircraft
Engine Room 1	46	Searchlight A or B
Engine Room 2	51	Aft main director [Secondary director]
Engine Room 2	52	Void
Main Magazine X	53-55	Main X
Main Magazine Y	56-62	Main Y
Fuel Oil 3, Propshaft 1 or 2	63	Void
Fuel Oil 3, Propshaft 3 or 4	64	Void
Steering	65	Steering
Void	66	Void

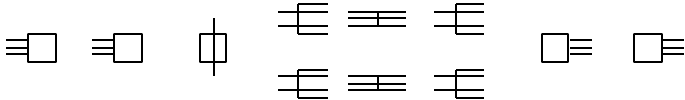
Internal Diagram



Southampton

<u>Navy</u>	Royal Navy	<u>Date</u>	1942
<u>Class</u>	Heavy cruiser		
<u>Surface Armament</u>		<u>Ranges</u>	<u>Directors</u>
Main Battery:	6 inch guns in 4 triple turrets	25 inches	See Notes
Secondary Battery:	4 inch guns in 4 twin mounts	16 inches	See Notes
Torpedoes:	21 inch torpedoes in 2 triple mounts 2 special hits	13 inches at 4.25" 16 inches at 2.75"	Port and starboard
<u>Speed</u>	4.00"	4 boilers	4 engines
<u>Flotation</u>	Total: 67	DIW: 33	Sinking: 44
		<u>Torpedo Hits</u>	17.7"-18": ±1 20.5"-22.5": ±2 24": ±3

Armament Arrangement



- Notes
- Eight ships in class, including Newcastle and Sheffield.
 - All has a forward primary director and port and starboard directors forward. Sheffield, Birmingham and Glasgow have a third secondary director aft. Manchester, Liverpool and Gloucester also had a second primary director aft.

Hits

Officers Berths	11-12	Void
Fuel Oil 1	13-14	Void
Main Magazine A	15-21	Main A
Main Magazine B	22-24	Main B
Main Magazine B	25	Bridge
Transmitting Room	26	Bridge, Main Director
Boiler Room 1	31	Bridge, Forward Secondary Director 1 or 2
Boiler Room 1	32	Search Radar, Aircraft
Boiler Room 1	33	Funnel, AAMGs, Aircraft
Engine Room 1	34	AAMGs
Engine Room 1	35	Catapult
Engine Room 1	36	Void
Boiler Room 2	41-42	Funnel
Boiler Room 2	43	Secondary 1 or 2, Searchlight
Secondary Magazine	44	Torpedo 1 or 2
Secondary Magazine	45	Torpedo 1 or 2
Engine Room 2	46	Secondary 3 or 4
Engine Room 2	51	AAMGs [Aft Secondary Director]
Engine Room 2	52	[Aft Secondary Director] [Aft Primary Director]
Main Magazine X	53-55	Main X
Main Magazine Y	56-62	Main Y
Fuel Oil 2, Propshaft 1 or 2	63-64	Void
Steering, Propshaft 3 or 4	65	Steering
Void	66	Void

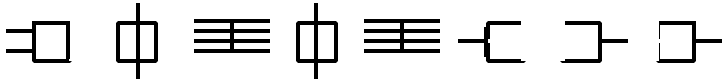
Internal Diagram

V1 1FP	FO1 2FP	FM A 2FP	FM B 2FP	TR 1FP	BR1 B1 B2 14FP	ER1 E1 E2 11FP	BR2 B3 B4 14FP	SM 2FP	ER2 E3 E4 11FP	AM X 2FP	AM Y 2FP	FO2 2FP	ST 1FP	V 0FP
-----------	------------	----------------	----------------	-----------	-------------------------	-------------------------	-------------------------	-----------	-------------------------	----------------	----------------	------------	-----------	----------

Type 36A

<u>Navy</u>	Deutsches Kriegsmarine	<u>Date</u>	1942
<u>Class</u>	Destroyer		
<u>Surface Armament</u>		<u>Ranges</u>	<u>Directors</u>
Main Battery:	5.9 inch guns in 1 twin and 3 single turrets	24 inches	Forward and aft
Torpedoes:	21 inch torpedoes in 2 quadruple mounts	8 inches at 5.00" 13 inches at 3.75"	Port and starboard
<u>Speed</u>	4.75"	6 boilers	2 engines
<u>Flotation</u>	Total: 31	DIW: 16	Sinking: 20
		<u>Torpedo Hits</u>	17.7"-18": ±1 20.5"-22.5": ±3 24": ±5

Armament Arrangement



Hits

Void 1	11-14	Void
Forward Main Magazine	15-22	Main A
Forward Main Magazine	23-24	AAMGs
Boiler Room 1	25	Bridge, Torpedo Directors
Boiler Room 1	26	Bridge, Forward Director
Boiler Room 2	31	Funnel
Boiler Room 2	32	Funnel
Turbogenerator Room	33	Torpedo A
Boiler Room 3	34-35	Torpedo A
Boiler Room 3	36	Funnel
Engine Room 1	41	Searchlight, AAMGs
Engine Room 1	42-43	Torpedo B, Torpedo Director
Fuel Oil	44	Torpedo B
Engine Room 2	45	AAMGs, Main M
Engine Room 2	46	Main M
Engine Room 2	51	Main M
Aft Main Magazine	52	AAMGs
Aft Main Magazine	53-55	Main X
Void 2	56-62	Main Y
Void 2, Propshaft 1 or 2	63-64	Void
Steering	65-66	Steering

Notes

- Class included Z-23 through Z-39.
- First eight completed with 4 single gun mounts. Most received a forward turret in lieu of the forward single mount in 1942.
- At first glance, "super-destroyers"; but the class suffered from poor sea-keeping abilities, unreliable powerplant, and a main battery too large for the hulls
- -2 to main battery accuracy; -3 (rather than -2) optional modifier in heavy seas.
- Fuel tanks like cruisers, outboard of machinery spaces.

Internal Diagram

V1	FM	BR1	BR2	TR	BR3	ER1	FO	ER2	AM	V2	ST
1FP	A 3FP	B1,B2 3FP	B3,B4 3FP	1FP	B5,B6 3FP	E1 4FP	1FP	E2 4FP	MX 4FP	2FP	2FP